

FOTILE

Built for Power Designed for Style

Powerful | Smart | Quiet



JQG9067-G

Power is FOTILE's inherent trait.



The next-generation DC inverter core

A robust heart with **100,000 RPM**, delivering surging power for superior performance



1120Pa maximum static pressure

Effortless ventilation even through ultra-long ducts



2800m³/h unrestrained airflow

Effortlessly handles intense wok-frying smoke



39dB quiet operation

Advanced noise suppression algorithm—boosts airflow without increasing noise



More smart features for the perfect cooking experience

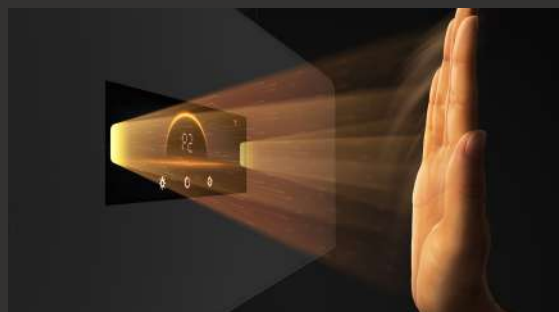


Range hood & stove smart linkage

Automatically activates ventilation when the stove ignites—seamless and hassle-free

Wave to control

Dual infrared sensors enable touch-free operation



Dedicated cleaning mode

The smoke barrier automatically opens to 123° for easy cleaning

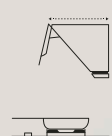
Redefining kitchen aesthetics with a new design



Unique moon-ring panel design

Every cooking session is filled with a sense of ceremony

350mm



350mm

Flush with cabinets

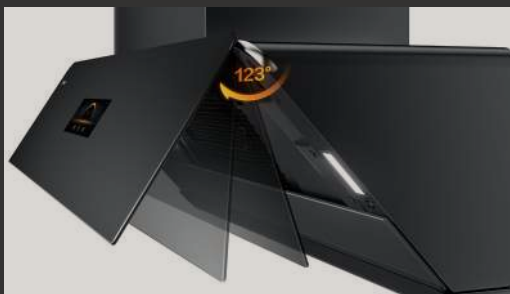
Exceptional experience perfected in every detail



Delayed shutdown



Extra-large oil cup



Durable opening panel



Oil-resistant soft lighting

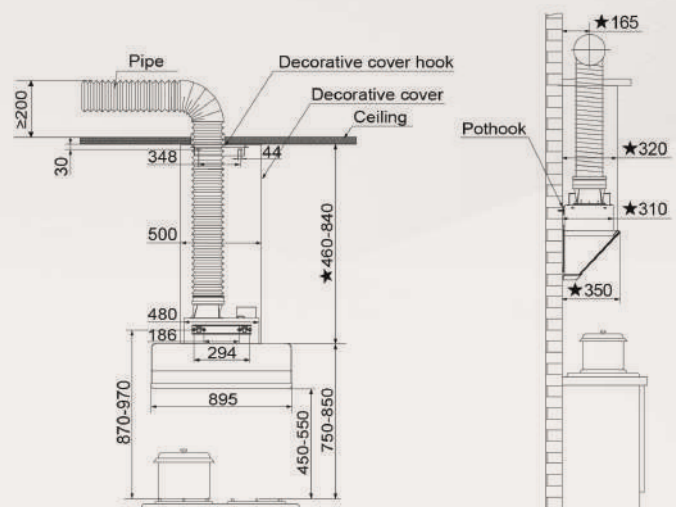
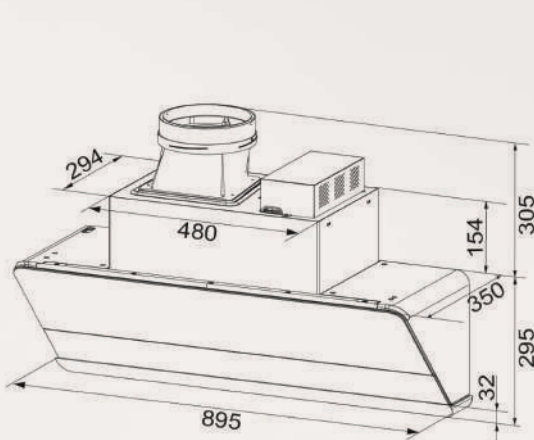


Product

JQG9067-G

Certification	CB, SIRIM,MCMC
Power Supply	220-240V 50Hz
Motor Type	BLDC
Motor Power (W)	258
LED lighting (W)	1.5W*2
Speed Level	Turbo+2
Max IEC Airflow (m³/h)	1500
Max Unrestrained Airflow (m³/h)	2800
Noise Level (dB)	48/39
Max Static Pressure (Pa)	1120
Delay Off	2min
Control Type	Touch + Motion
Panel	Color Panel
Screen Lock	Y
Sync Function	Y
Product Dimensions (W x D x H)	895 x 350 x 600

Installation Diagram



Product Basic Conditions(Unit: mm)

Installation diagram
(★ is the distance from the wall)